

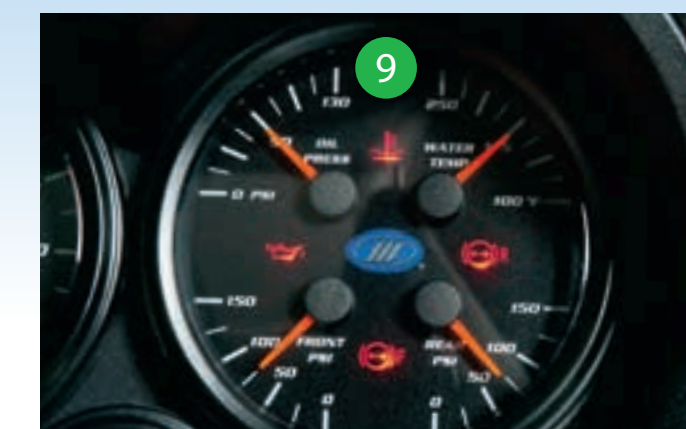
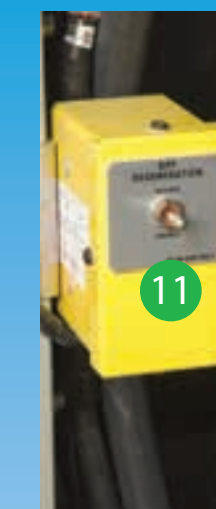
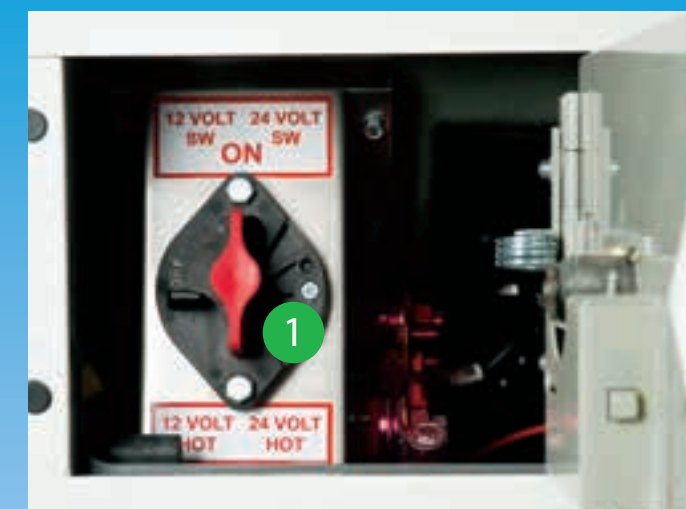
Driver's Guide

COMMUTER COACH

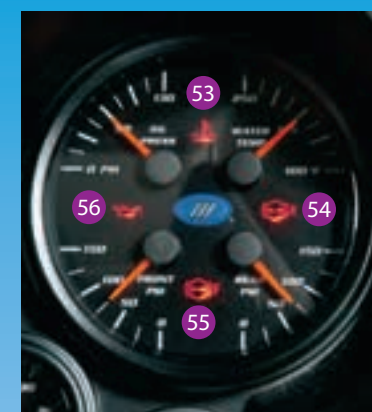
Equipped with ACTIA multiplex system



MOTOR COACH INDUSTRIES



1. Main Battery Disconnect switch, located behind the battery compartment door access panel
2. Exterior Entrance Door and Kneel switch, located beside the entrance door
3. Fresh Air Control Handle, located at the base of the lower, LH console
4. Driver Heater Control Handle, located at the base of the lower, LH console
5. Emergency Park Brake Release Valve, located at the base of the lower, LH console
6. Wheelchair lift
7. Lift Control Pendant switch
8. LCD Diagnostic Interface
9. 4-in-1 Gauge With Tell-tales
10. AMEREX Fire Suppression System Control Panel
11. Regeneration switch, located in the curbside, rear service compartment



LH Tell-tale Cluster

1. Left Turn Signal lamp
2. Wait to Start lamp
3. Check Engine lamp
4. Stop Engine lamp
5. Low Coolant lamp
6. Not Gen lamp
7. Diesel Particulate Filter (DPF) Regeneration lamp
8. High Exhaust Temperature lamp
9. Diesel Exhaust Fluid (DEF) lamp
10. Malfunction Indicator lamp (MIL)
11. Spare
12. Water in Fuel lamp
13. Park Brake lamp
14. Trailer Park Brake lamp (Special)
15. ABS lamp

16. ATC / Electronic Stability Control (ESC) lamp
17. Service Brake lamp
18. Engine Brake or Retarder lamp
19. Check Transmission lamp
20. Stop Transmission lamp
21. Retarder Temperature lamp (Optional)
22. Check Engine Hybrid lamp (Hybrid Coach)
23. Stop Engine Hybrid lamp (Hybrid Coach)
24. Hybrid Temperature lamp (Hybrid Coach)
25. Power Center Fault lamp (Hybrid Coach)

RH Tell-tale Cluster

26. Seat Belt lamp (Optional)
27. Check Info lamp (Alpha-numeric Display on Speedometer)

28. Low Fuel lamp (Optional)
29. Cruise Enabled lamp
30. High Beam lamp
31. Right Turn Signal lamp
32. Tag Steer lamp
33. Tag Lock lamp
34. Tag Unload lamp
35. Spare
36. Kneel lamp
37. High Ride lamp
38. Wheelchair Lift Door Open lamp
39. Wheelchair Interlock lamp
40. Front Door (Entrance) Open lamp
41. Speed Switch lamp (Special)
42. Wheelchair Stop Request lamp
43. Stop Request lamp

44. Auxiliary Heat lamp
45. Fire Alarm lamp
46. Emergency Lights lamp (ISTV Coach)
47. Dock Lights lamp
48. Engine Service Light lamp
49. Check Lube lamp (Special)
50. Back-up Alarm Off lamp (Special)
51. Jump Door Open lamp (ISTV Coach)
52. Lavatory Emergency lamp (Optional)

4-in-1 Gauge Tell-tales

53. Water Temperature lamp
54. Rear Air PSI lamp
55. Front Air PSI lamp
56. Oil Pressure lamp

MCI Sales and Service Centers

10 East Golf Road
Des Plaines, IL 60016 USA
(800) 428-7626

14 Harmon Drive
Blackwood, NJ 08012 USA
(800) 262-1287

3718 LB McLeod Road
Orlando, FL 32805 USA
(800) 390-0287

9787 Clifford Drive
Dallas, TX 75220 USA
(800) 248-4942

10850 Portal Drive
Los Alamitos, CA 90720 USA
(800) 777-4101

1400 Barre Street
Montreal, QC H3C 1N4 Canada
(800) 663-3328

Parts
To order parts:
(800) 323-1290 (US)
(800) 665-0155 (Canada/ English)
(800) 546-3457 (Canada/Français)

**Technical Support and
Emergency Roadside Assistance**
(800) 241-2947

**MCI Major
Repair Center**
520 North Spring Street
Loudonville, OH 44842
(877) 754-4404



MOTOR COACH INDUSTRIES

Going further!

www.mcccoach.com



Lower LH Console

- | | |
|-------------------------------------|---|
| 1. Chime switch | 15. Kneel switch |
| 2. 110 volt switch | 16. Engine overrule switch with self-cancelling flip cover |
| 3. Hazard switch | 17. Exterior mirror keypad control |
| 4. Engine Start switch | 18. Automatic transmission pushbutton shift selector w/ green panel illumination lights |
| 5. Fog light switch | 19. Dzus fastener key |
| 6. Dome light switch | 20. Reading light cover removal tool |
| 7. Driver's light switch | 21. Cup holder |
| 8. Panel illumination | 22. Accessory power supply |
| 9. Auxiliary heat switch | |
| 10. Parcel rack ventilation switch | |
| 11. RH blind switch | |
| 12. LH blind switch | |
| 13. Master run control | |
| 14. Entrance door open/close switch | |

2007 and 2010 EPA Engine Code Retrieval—LCD Diagnostic Interface



To view the ENGINE FAULT CODES:

1. Locate the LCD diagnostic interface,
2. Position the DIAGNOSTICS toggle switch to ON,
3. Press the POWER TRAIN screen bar on the HOME screen,
4. Press the ENGINE FAULT CODES screen bar,
5. Navigate through the screen to view active and non-active engine fault codes.

Dashboard Controls

1. Interior light switch
2. Front light switch
3. Reading light switch
4. Dimmer reading light switch
5. Cruise control on/off switch
6. Cruise control set/resume switch
7. Engine Brake switch
8. Fast idle switch
9. Tag axle switch
10. Rear rise switch
11. ATC mud/snow switch
12. Drivers fan (defrost)
13. Heating and A/C control panel
14. Turn signal/windshield wipers and washers
15. Steering column adjustment
16. Entrance door air dump valve
17. P.A. System
18. Vent
19. SmarTire® and SmartWave® full function display
20. Fuel gauge
21. Voltmeter gauge
22. Speedometer with alpha-numeric display
23. 4-in-1 gauge with tell-tales
24. Tell-tales
25. Wheelchair lift master switch with self-cancelling flip cover
26. Park brake valve
27. Electric horn
28. DEF gauge
29. Transmission temperature gauge
30. Instrument panel

