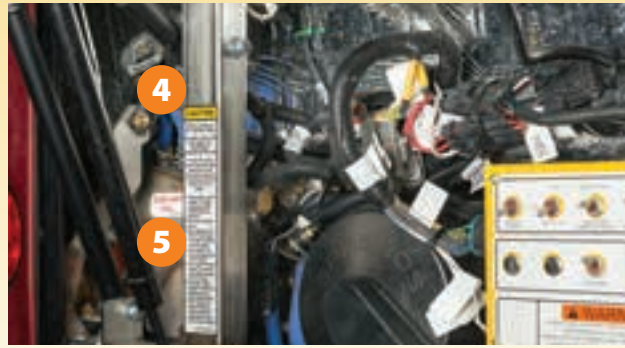


Driver's Guide

J4500



1. Diesel (ULSD) Fuel Fill
2. Diesel Exhaust Fuel (DEF) Fill. **DO NOT** put anything but DEF in the DEF tank (Blue Cap)
3. Windshield Washer Reservoir
4. Coolant Fill
5. Special Coolant Fill Instruction Decal



LH Tell-tale Cluster

1. Left Turn Signal Lamp
2. Wait to Start Lamp
3. Check Engine Lamp
4. Stop Engine Lamp
5. Low Coolant Lamp
6. Not Gen Lamp
7. Diesel Particulate Filter (DPF) Regeneration Lamp
8. High Exhaust Temperature Lamp
9. Diesel Exhaust Fluid (DEF) Lamp
10. Malfunction Indicator Lamp (MIL)
11. Spare
12. Water in Fuel Lamp
13. Park Brake Lamp
14. Trailer Park Brake Lamp
15. ABS Lamp

16. ATC / Electronic Stability Control (ESC) Lamp

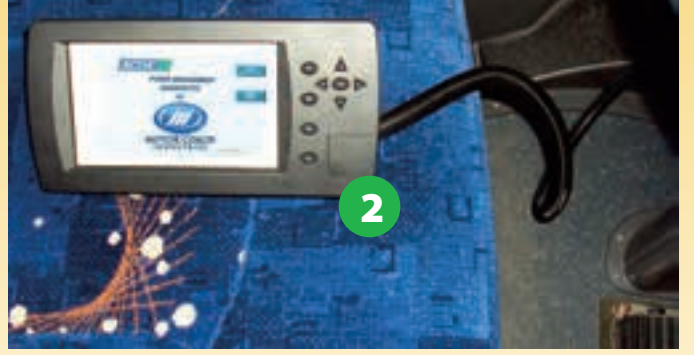
16. ATC / Electronic Stability Control (ESC) Lamp
17. Service Brake Lamp
18. Engine Brake or Retarder Lamp
19. Check Transmission Lamp
20. Stop Transmission Lamp
21. Retarder Temperature Lamp
22. Brake Wear Lamp
23. Fuel Filter Restriction Lamp
24. Tag Lock Fault Lamp
25. No Hill Start Lamp

RH Tell-tale Cluster

26. Seat Belt Lamp
27. Check Info Lamp (Refer to Alpha-numeric Display on Speedometer for Message)



28. Low Fuel Lamp
29. Cruise Enabled Lamp
30. High Beam Lamp
31. Right Turn Signal Lamp
32. Rear Rise Lamp
33. High Ride Lamp
34. Low Ride Lamp
35. Ride Fault Lamp
36. Kneel Lamp
37. Tag Unload Lamp
38. Wheelchair Lift Door Open Lamp
39. Wheelchair Interlock Lamp
40. Front (Entrance) Door Open Lamp
41. Wheelchair Stop Request Lamp
42. Stop Request Lamp
43. Auxiliary Heat Lamp
44. Fire Alarm Lamp
45. Emergency Lights Lamp
46. Dock Lights Lamp
47. Engine Service Light Lamp
48. Bike Rack Lamp
49. Check Lube Lamp
50. Back-up Alarm Off Lamp
51. Lavatory Emergency Lamp



1. Instrument Panel Gauges
2. LCD Diagnostic Interface, located in the front, curbside parcel rack, featuring touch screen and button control. There are three (3) interface port locations on the coach:
 1. Underneath the instrument panel,
 2. In the rear junction box (baggage bay compartment #3), and
 3. Bottom face of the engine compartment remote control box.
3. AMEREX Fire Suppression System Control Panel
4. Driver Courtesy YO Light Switch
5. Cruise Control—ON Switch
6. Cruise Control—OFF Switch
7. Cruise Control—SET Switch
8. Cruise Control—RESUME Switch
9. Cruise Control—CANCEL Switch
10. Jake Brake Control—OFF
11. Jake Brake Control—LOW
12. Jake Brake Control—MEDIUM
13. Jake Brake Control—HIGH



2015 EPA Regeneration Tell-Tales

When you see this:



➡ DPF tell-tale indicates a regeneration is required. If possible, maintain road speed above 5 mph for a minimum of twenty (20) minutes for the system to do an automatic regen. If not possible, and the DPF tell-tale is ON solid, perform a stationary regen within two (2) hours. If DPF tell-tale is flashing, perform a stationary regen in less than one (1) hour.



➡ Engine power is de-rated, regeneration required. Move the coach to a safe location and perform stationary regen within thirty (30) minutes.



➡ Engine power is de-rated or engine shutdown has been engaged. Regeneration locked out and cannot be performed. Service is required. Contact Motor Coach Industries or engine manufacturer for assistance. Red stop engine light tell-tale ON solid first, then flashing indicates thirty (30) seconds to shutdown. Once shut down, coach may need to be towed.

2015 EPA Tell-Tales



➡ Nothing. Tell-tale is only active when coach is below 5 mph. When illuminated, the exhaust temperature is > 750° F (400° C) This tell-tale can be ON in conjunction with other tell-tales.



➡ Tell-tale indicates a failure of an emission system component. Seek service from a Detroit Diesel service facility.



Reliability Driven[®]
mcicoach.com



Technical Support and
Emergency Roadside Assistance
(800) 241-2947



Operator's
Manual



Reliability Driven[®]

Effective with unit number 67310



Lower LH Console

1. 110 Volt Switch
2. Tag Lock/Auto Switch
3. Mud/Snow Switch
4. Fast Idle Switch
5. Tag Axle Unload Switch (shrouded)
6. Rear Rise Switch (shrouded)
7. Level Control Switch (shrouded)
8. Normal Ride / Recover (shrouded)
9. LH Blind Switch
10. RH Blind Switch
11. Cup Holder
12. Front Service Compartment/T-Handle Door Release
13. Emergency Park Brake Release Valve
14. Transmission Control (Push Button Shift Selector)
15. Headlight Switch
16. Mirror Switch
17. 12 Volt Power Source
18. Anti-Slip Pad

Vehicle specifications may change without notice.

ACTIA MULTIPLEX SPEEDOMETER MESSAGE CENTER



A two button user interface enables navigation to the following screens on the speedometer alphanumeric display:

- Press the TRIP button to display the Odometer screen. Toggle between Trip A and Trip B by pressing the TRIP button.
- Press the MODE and TRIP buttons together four (4) times within four (4) seconds to enter Silent Mode. Coach speed less than 3 mph cancels the Silent Mode feature.
- Press the MODE button for five (5) seconds to display the Gauge Diagnostics screen. Toggle thru the screen menu to select features such as English or metric units, LCD Display Contrast and Instrument Diagnostic menu. This feature closes if a button is not pressed with four (4) seconds.
- Features such as Starter Diagnostics Messages, CommError Messages and Other Information Messages may appear on the screen based on that specific application programming.

Dashboard Controls

1. Interior Light Switch
2. Reading Light Switch
3. Baggage Bay Light Switch
4. LH Baggage Door Lock Switch
5. RH Baggage Door Lock Switch
6. Kneeling Switch
7. Entrance Door Open/Close Switch
8. Panel Light Switch
9. Driver's Light Switch
10. Stepwell Light Switch. Position switch to ON to start coach, if coach is equipped with anti-theft feature.
11. Blue LED Light Switch
12. Event Switch
13. Hazard/Warning Light Switch
14. Fog Lights Switch
15. Mirror Heat Switch
16. Parcel Rack Blower Switch
17. Auxiliary Heater Switch
18. Override Switch
19. Engine Start Switch
20. Master Power Switch
21. Speedometer with Alpha-Numeric Display
22. 4-in-1 Gauge with Tell-tales
23. 3-in-1 Gauge
24. Transmission Temperature Gauge with Tell-tale
25. Voltmeter Gauge with Tell-tale
26. SmarTire® /SmartWave® Full Functional Display
27. Driver's Fan
28. Driver's Heat Control
29. Micromate Control Panel
30. Park Brake Valve
31. Turn Signal / Air Horn / Windshield Washer and Wiper Controller
32. Tell-tale Cluster
33. Vent
34. CD Player/Receiver
35. Wingman Collision Mitigation System Driver Interface Unit (DIU) (Option)

